


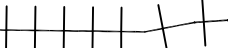

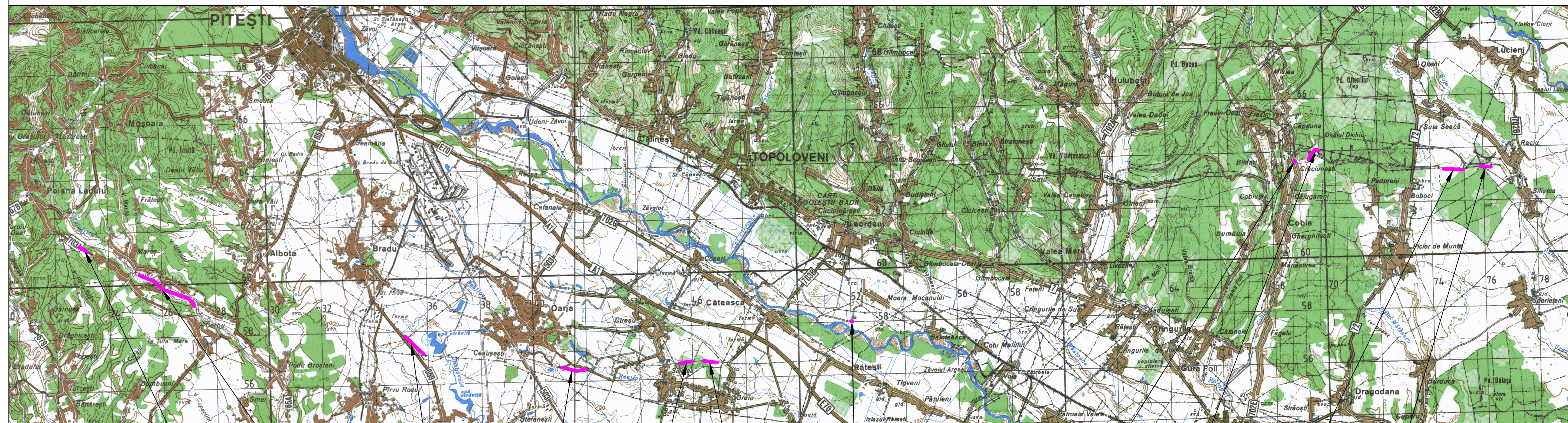


Inlocuire conducta de titei Ø 10 3/4" F2 Poiana Lacului-Siliste
L = 7510 m, in zonele supratraversare rau Teleorman cu
punere in siguranta (loc. Mares fost SMA), Parvu Rosu, izlaz Oarja,
Cateasca Leordeni, Cobiuta, Cobia, Siliste

PLAN DE INCADRARE

LEGENDA

-  Tronsoane de inlocuit
-  Drum national
-  Localitati
-  Cai ferate
-  Rauri, parauri, canale



Tronson 1
L = 359 m

Tronson 2
L = 2471 m

Tronson 3
L = 963 m

Tronson 4
L = 889 m

Tronson 5
L = 489 m

Tronson 6
L = 500 m

Tronson 7
L = 60 m

Tronson 8
L = 69 m

Tronson 9
L = 586 m

Tronson 10
L = 727 m

Tronson 11
L = 397 m